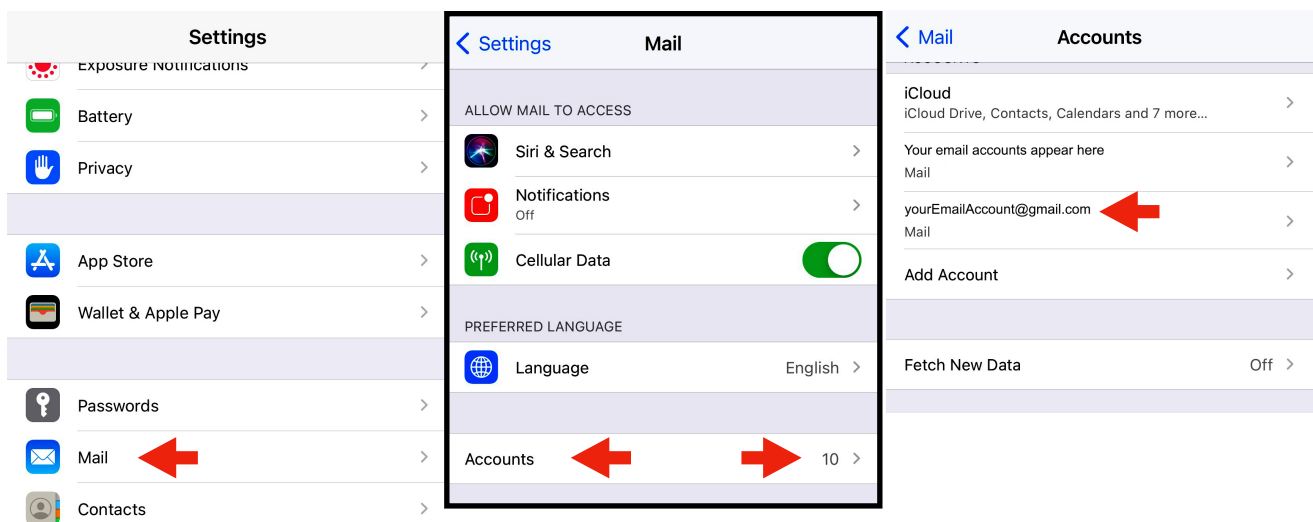


# iPhone Settings for Using Gmail in Apple's Mail App

Though Google offers its own Gmail iPhone app for email, many people prefer to stick with Apple's Mail app for their email, including their Gmail accounts. Apple is known for not snooping on their users' email content, and Google cannot claim that same hands-off policy.

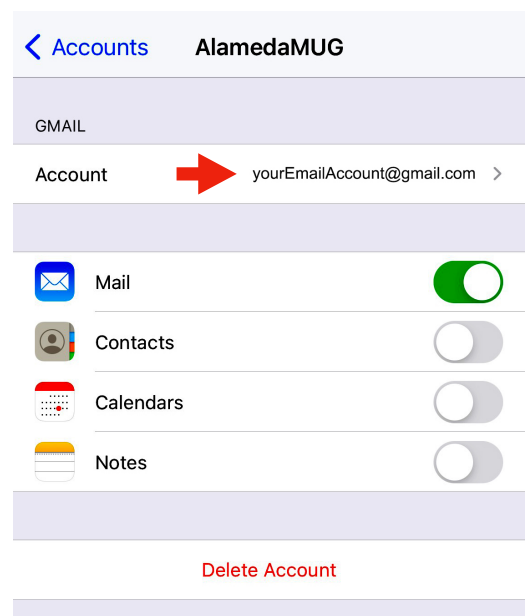
However, Gmail accounts do not always work as Apple users would hope when using Apple's Mail app, usually because one or more for the default settings for the account is not properly configured. We'll cover the correct settings for using a Gmail account in Apple's Mail app in detail below.

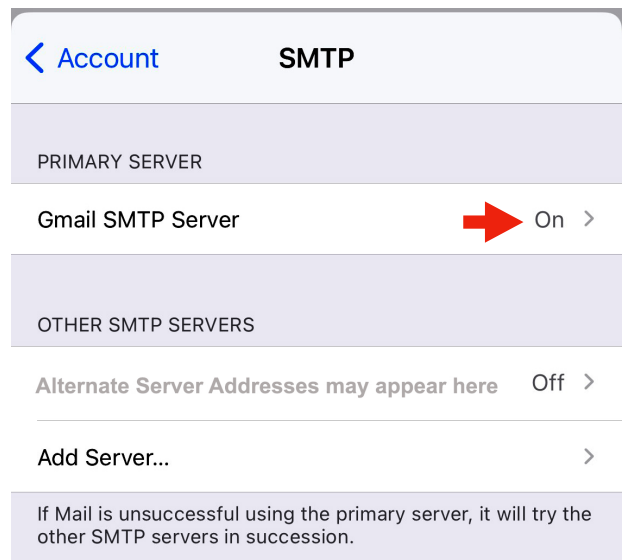
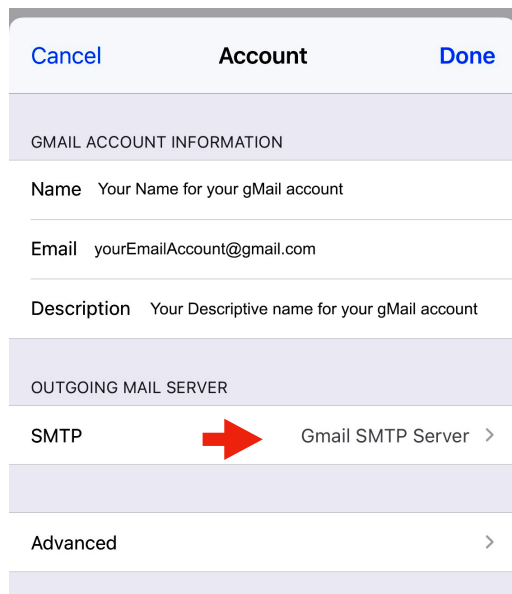


Open Settings and scroll down to the Mail icon (just below Passwords in iOS 14). Click on Mail and find the line for Accounts, which has a number for how many accounts have already been setup. Click on that number, and find your Gmail Email Account in the list, then click on it.

This will take you to a screen for that single account where you can enable or disable it as a Mail account. It must be enabled for Mail. (We'll not go into its other possible uses here.)

Again, click on the email address at the top to see further details of that email account's settings. That's where some settings may need adjusting.





Click on the **Gmail SMTP Server** line (red arrow), and then click on the **On** setting in the SMTP screen for the Gmail SMTP Server itself (top line). The SMTP server handles your outgoing mail between Apple's Mail and Google's email.

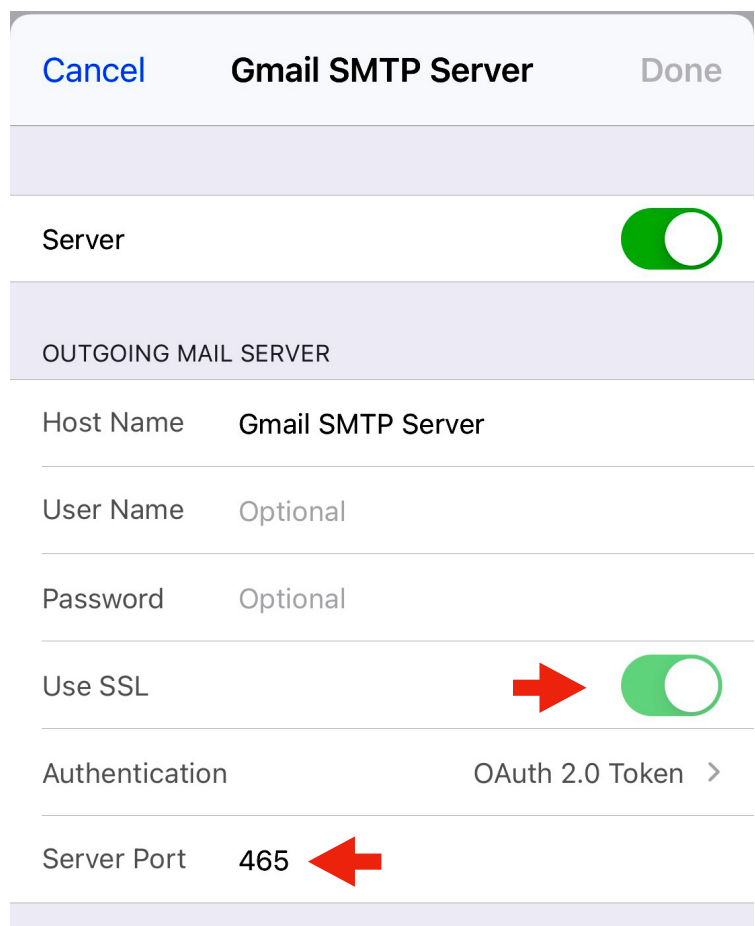
This brings us to the settings for how Mail will interact with that server.

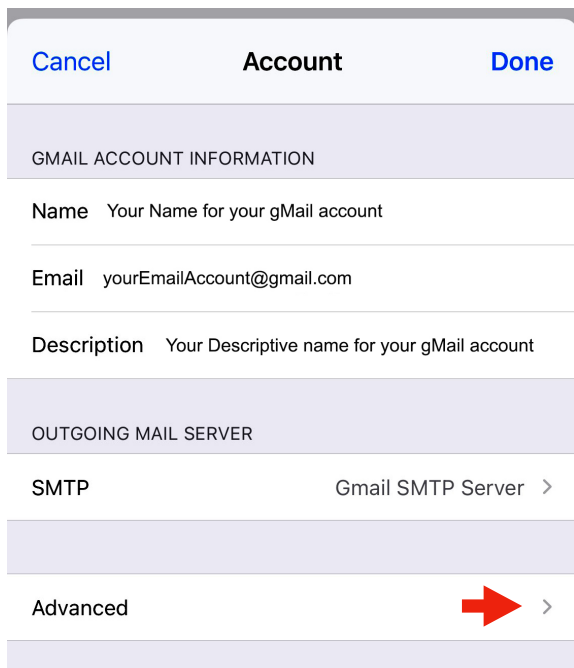
SSL should be enabled, and the Server Port number set to 465. Those two settings are sometimes incorrect after using the default option to add a new Google Gmail account to the Mail app.

The User Name and Password lines can be left blank or filled in on this screen, but be sure to enter them correctly if you do enter anything here.

After any changes, click the Done button to save them. Either Done or Cancel will return you to the previous screen. You will need to back out one more screen to the

Account screen for the next part (shown top left of this page and on next page).





From the Account screen, click on Advanced to check the Incoming Mail Server settings for receiving email.

In the Incoming Settings section, be sure that SSL is turned On and the Server Port for incoming mail is set to 993.

Once you are done, back out through the screens to the main Settings screen. Along the way, Settings may need to pause to verify that the settings work.

After you have completed any corrections to Mails settings for Gmail, you may also need to go to [google.com](https://support.google.com/mail/answer/7126229) and sign in to be sure that SMTP and IMAP have been enabled on your account. Google does not always enable IMAP / SMTP for use with non-Google apps, so don't skip this step if you've had any Gmail issues.

Google has a short help page on how to enable IMAP / SMTP on your Google account at: <https://support.google.com/mail/answer/7126229>

